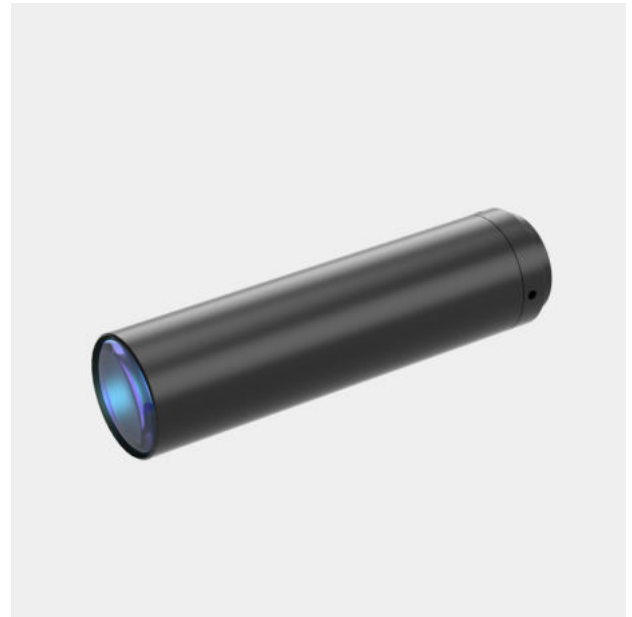


WH014-650A-110

Megapixel high resolution lens

- Perfect image and supports all kinds of Mega camera;
- High contrast, low distortion, high resolution.



Optical Specifications	
Magnification (x)	0.14
Working Distance (mm)	650
Max Sensor Size (Φmm)	16(1")
Aperture (F/#)	15
Telecentricity typical (max) (deg)	-
Distortion typical (max) (%)	0.25
NA	0.00467
Resolution (um)	71.8
Depth of Field (mm)	61

Field of View (mm × mm)	
1/2"(6.4x4.8)	45.7x34.3
1/1.8"(7.13x5.37)	50.9x38.4
2/3"(8.8x6.6)	62.9x47.1
1"(12.43x9.83)	88.8x70.2
Mechanical Specifications	
Mount	C
Length (mm)	109.7
Coaxial Light	No
Iris	No

Notes:

1. Depth of Field is calculated value, this value could be used for imaging test, but to get sharp image in application, half of calculated value is suggested.

