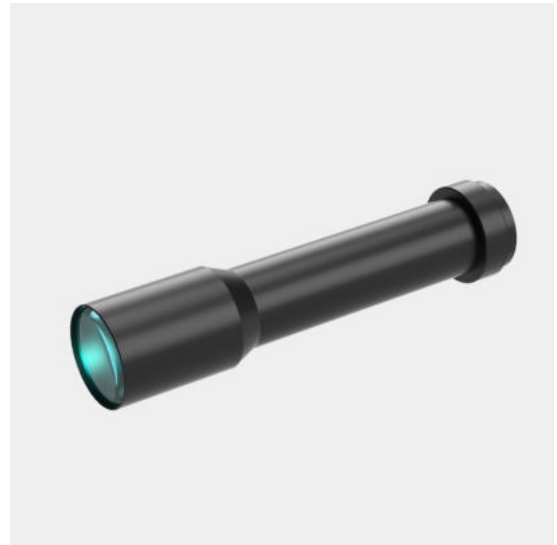


# WH015-680A-230

Megapixel high resolution lens

- Perfect image and supports all kinds of Mega camera;
- High contrast, low distortion, high resolution.



Optical Specifications	
Magnification (x)	0.15
Working Distance (mm)	680
Max Sensor Size (Φmm)	11(2/3")
Aperture (F/#)	10.5
Telecentricity typical (max) (deg)	-
Distortion typical (max) (%)	0.05
NA	0.00715
Resolution (um)	46.9
Depth of Field (mm)	37.3

Field of View (mm × mm)	
1/2"(6.4x4.8)	42.7x32.0
1/1.8"(7.13x5.37)	47.5x35.8
2/3"(8.8x6.6)	58.7x44.0
Mechanical Specifications	
Mount	C
Length (mm)	122.46
Coaxial Light	No
Iris	No

Notes:

1. Depth of Field is calculated value, this value could be used for imaging test, but to get sharp image in application, half of calculated value is suggested.

