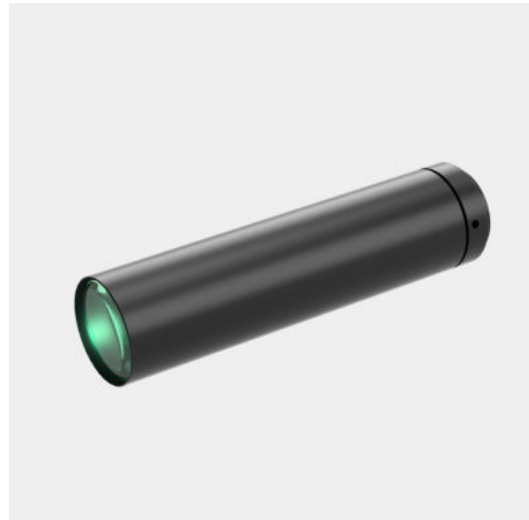


WH016-600A

Megapixel high resolution lens

- Perfect image and supports all kinds of Mega camera;
- High contrast, low distortion, high resolution.



Optical Specifications	
Magnification (x)	0.16
Working Distance (mm)	600
Max Sensor Size (Φmm)	11(2/3")
Aperture (F/#)	11.8
Telecentricity typical (max) (deg)	-
Distortion typical (max) (%)	0.1
NA	0.00683
Resolution (um)	49.1
Depth of Field (mm)	37

Field of View (mm × mm)	
1/2"(6.4x4.8)	40.0x30.0
1/1.8"(7.13x5.37)	44.6x33.6
2/3"(8.8x6.6)	55.0x41.3
Mechanical Specifications	
Mount	C
Length (mm)	116.6
Coaxial Light	No
Iris	No

Notes:

1. Depth of Field is calculated value, this value could be used for imaging test, but to get sharp image in application, half of calculated value is suggested.

