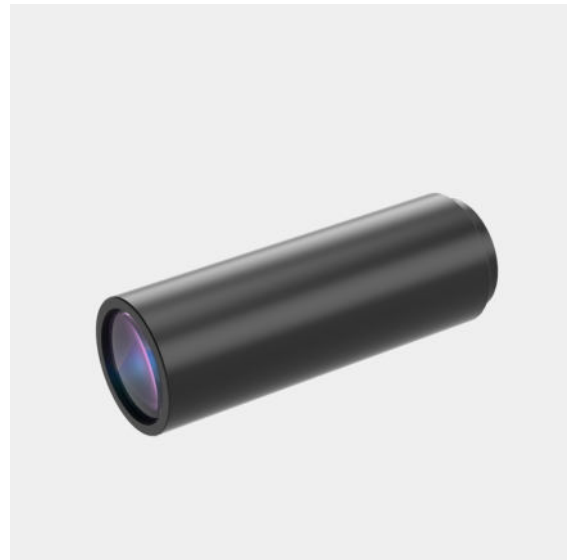


# WH029-225A-110

Megapixel high resolution lens

### WH Series Features:

- Perfect image and supports all kinds of Mega camera;
- High contrast, low distortion, high resolution.



Optical Specifications	
Magnification (x)	0.29
Working Distance (mm)	225
Max Sensor Size (Φmm)	16(1")
Aperture (F/#)	9.5
Telecentricity typical (max) (deg)	-
Distortion typical (max) (%)	0.01
NA	0.0153
Resolution (um)	22
Depth of Field (mm)	9

Field of View (mm × mm)	
1/1.8"(7.13x5.37)	24.6x18.5
2/3"(8.45x7.1)	29.1x24.5
1"(12.43x9.83)	42.9x33.9

Mechanical Specifications	
Mount	C
Length (mm)	82
Coaxial Light	No
Iris	-

### Notes:

1. Depth of Field is calculated value, this value could be used for imaging test, but to get sharp image in application, half of calculated value is suggested.

