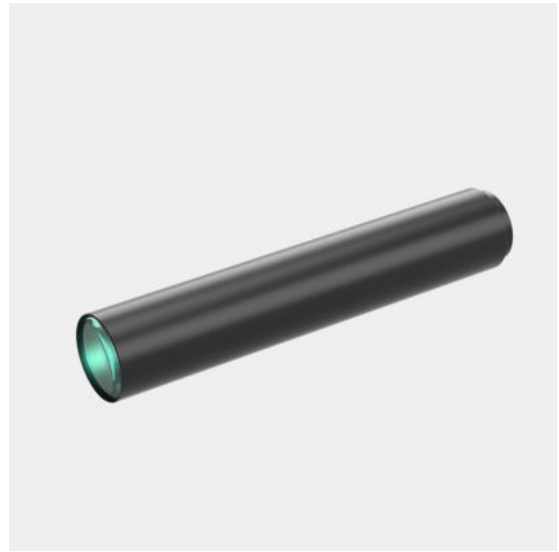


# WH03-460A-230

Megapixel high resolution lens

- Perfect image and supports all kinds of Mega camera;
- High contrast, low distortion, high resolution.



Optical Specifications	
Magnification (x)	0.3
Working Distance (mm)	460
Max Sensor Size (Φmm)	11(2/3")
Aperture (F/#)	11.6
Telecentricity typical (max) (deg)	-
Distortion typical (max) (%)	0.17
NA	0.01293
Resolution (um)	25.9
Depth of Field (mm)	10.3

Field of View (mm × mm)	
1/2"(6.4x4.8)	21.3x16.0
1/1.8"(7.13x5.37)	23.8x17.9
2/3"(8.8x6.6)	29.3x22.0
Mechanical Specifications	
Mount	C
Length (mm)	156.3
Coaxial Light	No
Iris	No

Notes:

1. Depth of Field is calculated value, this value could be used for imaging test, but to get sharp image in application, half of calculated value is suggested.

