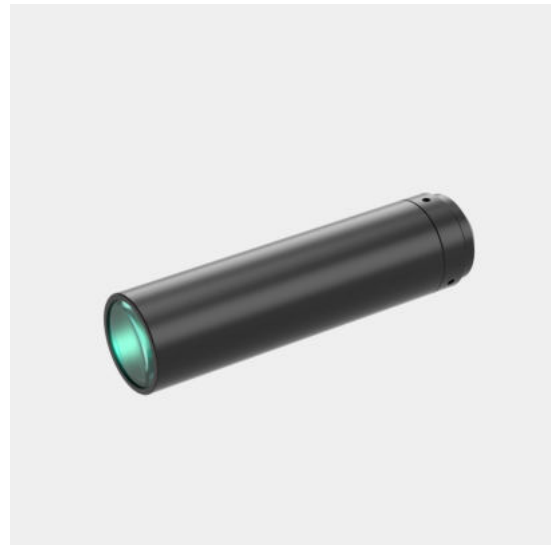


# WH033-560A-230

Megapixel high resolution lens

- Perfect image and supports all kinds of Mega camera;
- High contrast, low distortion, high resolution.



Optical Specifications	
Magnification (x)	0.33
Working Distance (mm)	560
Max Sensor Size (Φmm)	11(2/3")
Aperture (F/#)	24.9
Telecentricity typical (max) (deg)	-
Distortion typical (max) (%)	0.05
NA	0.00658
Resolution (um)	51.0
Depth of Field (mm)	18.3

Field of View (mm × mm)	
1/2"(6.4x4.8)	19.6x14.5
1/1.8"(7.13x5.37)	21.6x16.3
2/3"(8.8x6.6)	26.7x20.0
Mechanical Specifications	
Mount	C
Length (mm)	101.1
Coaxial Light	No
Iris	No

Notes:

1. Depth of Field is calculated value, this value could be used for imaging test, but to get sharp image in application, half of calculated value is suggested.

