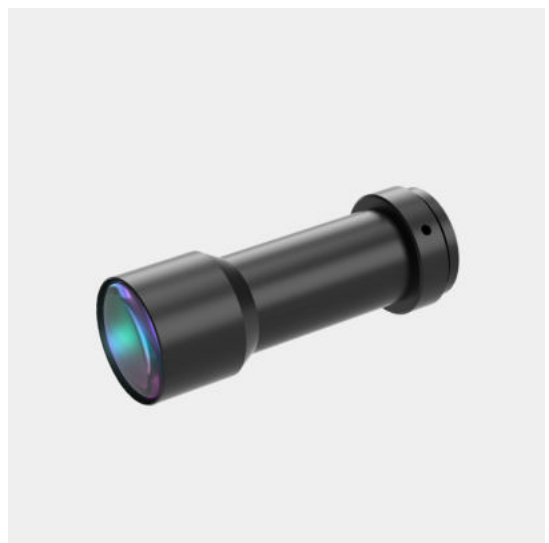


WH08-150AIR

Megapixel high resolution lens

- Perfect image and supports all kinds of Mega camera;
- High contrast, low distortion, high resolution.



Optical Specifications	
Magnification (x)	0.8
Working Distance (mm)	150
Max Sensor Size (Φmm)	11(2/3")
Aperture (F/#)	22.3
Telecentricity typical (max) (deg)	-
Distortion typical (max) (%)	2.1
NA	0.0179
Resolution (um)	28.6
Depth of Field (mm)	2.8

Field of View (mm × mm)	
1/2"(6.4x4.8)	8.0x6.0
1/1.8"(7.13x5.37)	8.9x6.7
2/3"(8.8x6.6)	11.0x8.3
Mechanical Specifications	
Mount	C
Length (mm)	73.7
Coaxial Light	No
Iris	No

Notes:

1. Depth of Field is calculated value, this value could be used for imaging test, but to get sharp image in application, half of calculated value is suggested.

