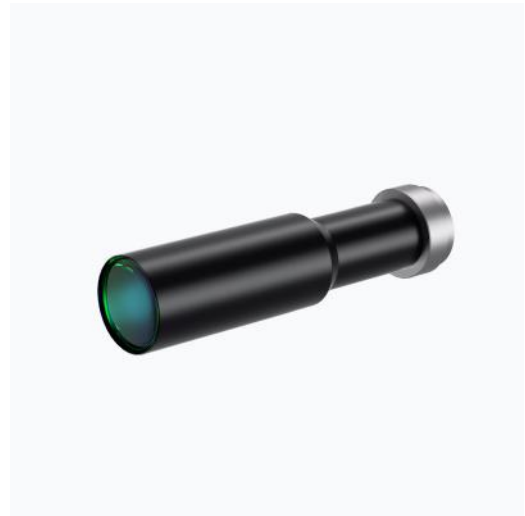


WWH15-63ATV3

Megapixel Telecentric Lens

- Compact design with coaxial illumination options;
- Perfect image and supports all kinds of Mega camera;
- High contrast, low distortion, high resolution;
- Optional adjustable Iris for resolution and DOF control;
- Megapixel 'object side' telecentric lens with optional long working distance versions with over 500mm working distance.



Optical Specifications	
Magnification (x)	1.5
Working Distance (mm)	63±1
Max Sensor Size (Φmm)	11.0(2/3")
Aperture (F/#)	7.5
Telecentricity typical (max) (deg)	0.03
Distortion typical (max) (%)	0.04
MTF30(lp/mm)	104
NA	0.1
Resolution (μm)	3.4
Depth of Field (mm)	0.3

Field of View (mm × mm)	
1/2"(6.4x4.8)	4.3x3.2
1/1.8"(7.13x5.37)	4.8x3.6
2/3"(8.45x7.1)	5.6x4.7
Mechanical Specifications	
Mount	C
Length (mm)	111.0
Coaxial Light	No
Iris	No

Notes:

1. Depth of Field is calculated value, this value could be used for imaging test, but to get sharp image in application, half of calculated value is suggested.

