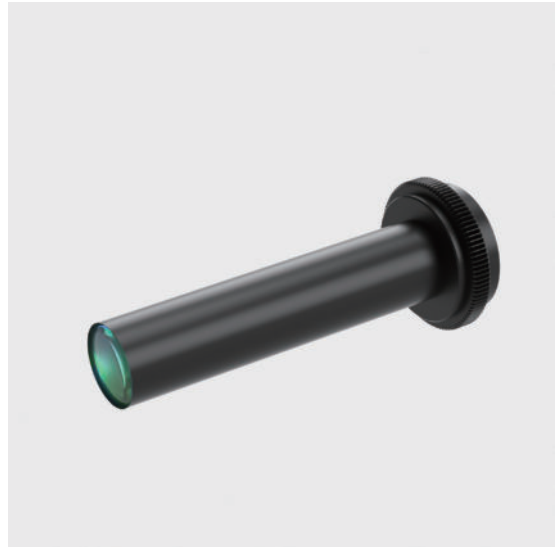


# WWL05-250A

## Standard Fixed Magnification Lens

- Compact design with 16mm diameter, ideal for limited space;
- Compact design with coaxial light options;
- Variable WD/Magnification available;
- WWH or WWK series available for Megapixel camera or high-level camera.



Optical Specifications	
Magnification (x)	0.5
Working Distance (mm)	250
Max Sensor Size (Φmm)	6.0(1/3")
Aperture (F/#)	15.9
NA	0.0158
Resolution (um)	21.2
Depth of Field (mm)	5.1

Field of View (mm × mm)	
1/4"(3.2x2.4)	6.4x4.8
1/3"(4.8x3.6)	9.6x7.2
Mechanical Specifications	
Mount	C
Length(mm)	68.5
Coaxial Light	No
Iris	No

**Notes:**

1. Depth of Field is calculated value, this value could be used for imaging test, but to get sharp image in application, half of calculated value is suggested.

