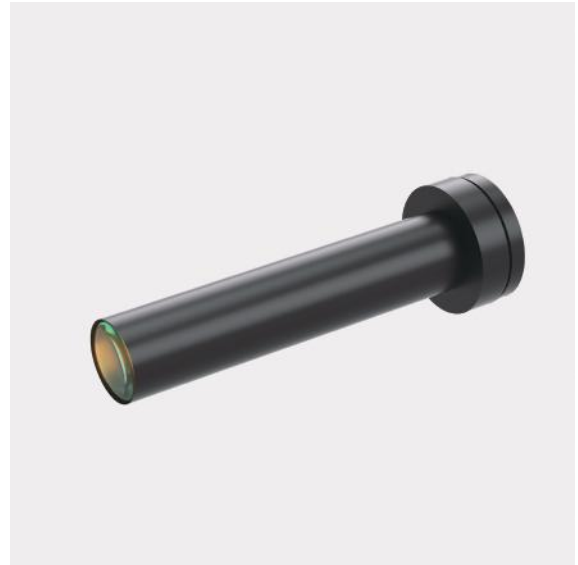


# WWL10-65ATN

## Standard Fixed Magnification Lens

- Compact design with 16mm diameter, ideal for limited space;
- Compact design with coaxial light options;
- Variable WD/Magnification available;
- WWH or WWK series available for Megapixel camera or high-level camera.



Optical Specifications	
Magnification (x)	1.0
Working Distance (mm)	65
Max Sensor Size (Φmm)	6(1/3")
Aperture (F/#)	12.1
NA	0.04084
Resolution (um)	8.2
Depth of Field (mm)	1.0

Field of View (mm × mm)	
1/4"(3.2x2.4)	3.2x2.4
1/3"(4.8x3.6)	4.8x3.6
Mechanical Specifications	
Mount	C
Length(mm)	80.1
Coaxial Light	No
Iris	No

**Notes:**

1. Depth of Field is calculated value, this value could be used for imaging test, but to get sharp image in application, half of calculated value is suggested.

