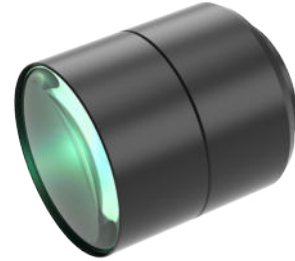


WWT118-05-56

Standard Fixed Magnification Lens

- High Resolution,
- Any magnification between 0-1X can be quickly customized,
- Small size, suitable for narrow spaces.



Optical Specifications	
Magnification (x)	0.5
Working Distance (mm)	56
Max Sensor Size (Φmm)	9(1/1.8")
Aperture (F/#)	8
NA	0.0312
Resolution (um)	10.8
Depth of Field (mm)	2.6
Focal Length (mm)	24.89
MTF30 (lp/mm)	136
TV Distortion (%)	-0.034

Field of View (mm × mm)	
1/1.8"(7.13x5.37)	14.26x10.74
1/1.8"(7.43x4.9)	14.86x9.8
2/3"(8.45x7.1)	16.9x14.2
Mechanical Specifications	
Mount	C
Length(mm)	37.0

Notes:

1. Depth of Field is calculated value, this value could be used for imaging test, but to get sharp image in application, half of calculated value is suggested.

