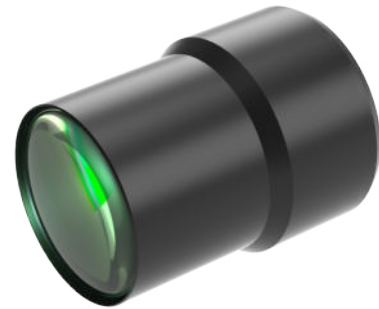


WWT121-01-516

Standard Fixed Magnification Lens

- High Resolution,
- Any magnification between 0-1X can be quickly customized,
- Small size, suitable for narrow spaces.



Optical Specifications	
Magnification (x)	0.1
Working Distance (mm)	516
Max Sensor Size (Φmm)	19.2(1.2")
Aperture (F/#)	5.0
NA	0.01001
Resolution (um)	33.5
Depth of Field (mm)	40.0
Focal Length (mm)	50.07
MTF30 (lp/mm)	186
TV Distortion (%)	0.1

Field of View (mm × mm)	
1.2"(14.6x12.6)	146x126

Mechanical Specifications	
Mount	C
Length(mm)	52.1

Notes:

1. Depth of Field is calculated value, this value could be used for imaging test, but to get sharp image in application, half of calculated value is suggested.

